

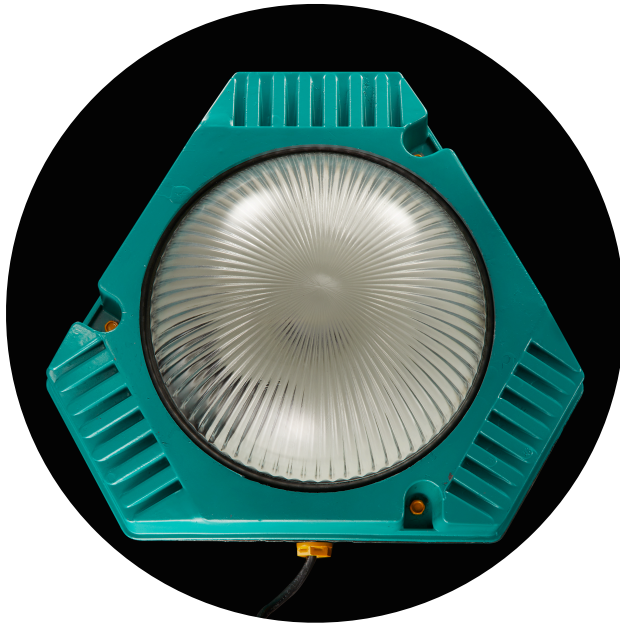


763-954-1943 | [fixtelectric@gmail.com](mailto:fixtelectric@gmail.com) | 1618 Central Ave NE, STE 06 Minneapolis MN 55413

---

## Lighting Specification Sheet

UL & cUL File Number: E488919



**Height:** 12 in. **Diameter:** 14 in. **Weight:** 9lbs.

## Star Czech

Bring the space race home with this rare Ukrainian star destroyer, we mean scone...The borosilicate prismatic lens nestles in an industrial aluminum cast frame of retro teal, accented by contrasting yellow nuts and bolts.

**Socket Type:** E26

**Lamp Type:** A19

**Max Wattage:** 15 W (customizable)

**Color:** Retro Teal/Industrial Yellow

**Canopy:** 5 in. Black Canopy  
(customizable)

**Mounting & Suspension:** Wall  
Mount